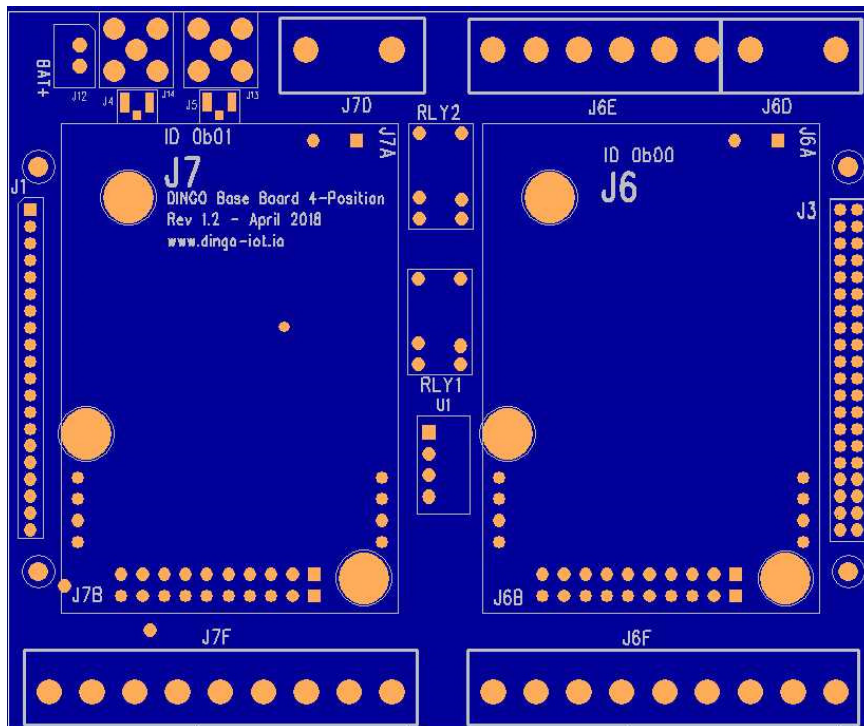


DINGO Two Station Base Board

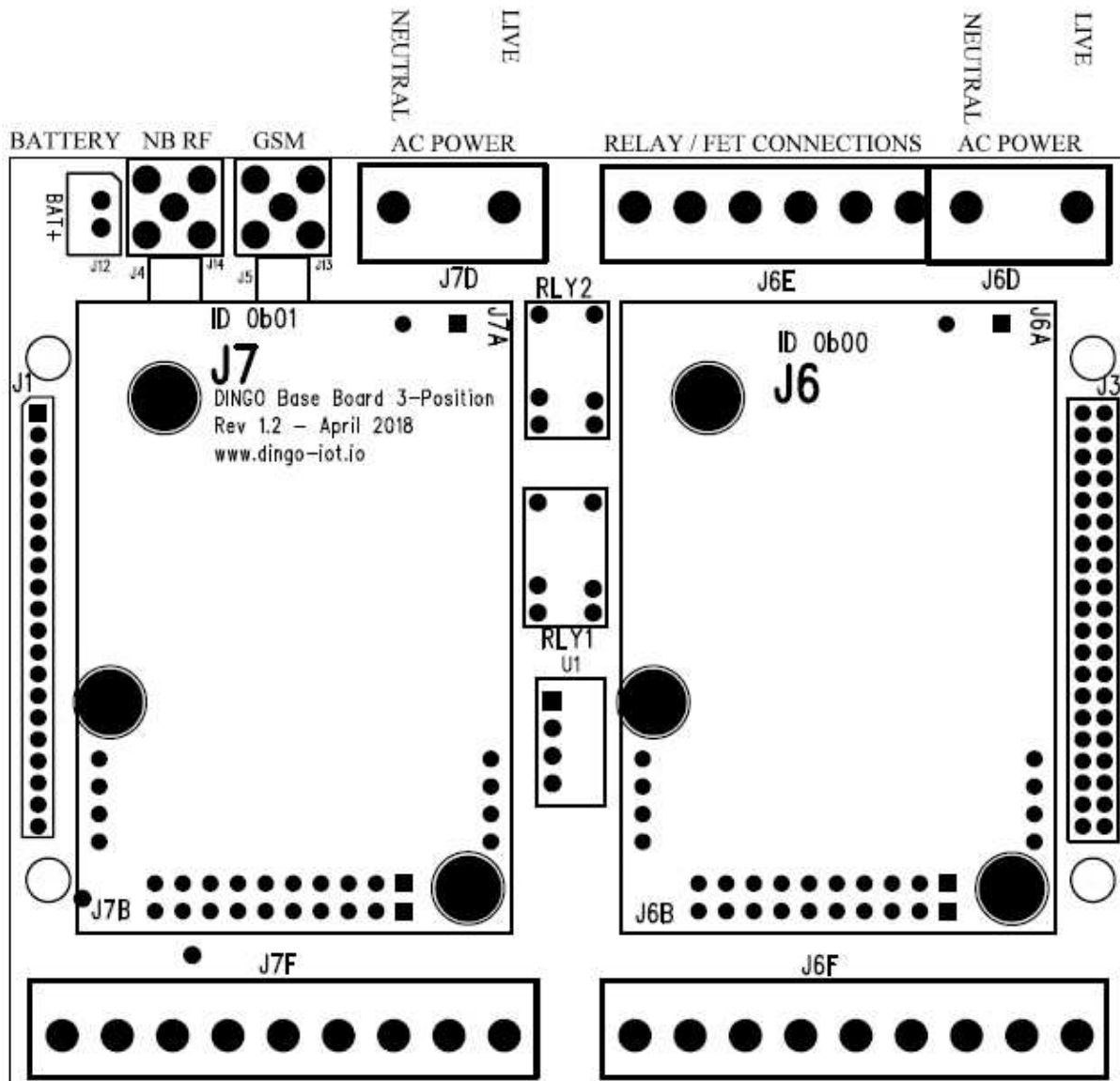
DATASHEET COMPLETE

Item specifications

Go-IoT Item Id:	Option	DINGO-BB-2ST-01
Plug-in Positions		2
USB 2.0 Ports		2
Serial TTL Interface		2
I2C Ports		1
SPI Ports		1
Opto Isolated Inputs	A	4 Dry Inputs – 4 Wet Inputs
Relays	B	2 – 240VAC 1A
Opto Isolated FET Outputs	C	4 – N Channel 42V DC 14A
Battery Backup	E	1 – Intelligent UPS and DC Supply Monitoring
Expansion Connectors		1 x 40way header from Computer Board 1 x 20way header from Computer Board 21 x GPIO
DC Input	F	+12V DC
DC Input	G	+15V DC - +42V DC
Screw Terminals	J	
Push On Terminals	K	
Temperature		-20degree C to +85degree C
Size (L x W x H)		102 x 85 x 40 mm
Country/Region of Manufacture:		EU



HIGH VOLTAGE CONNECTIONS



LOW VOLTAGE CONNECTIONS