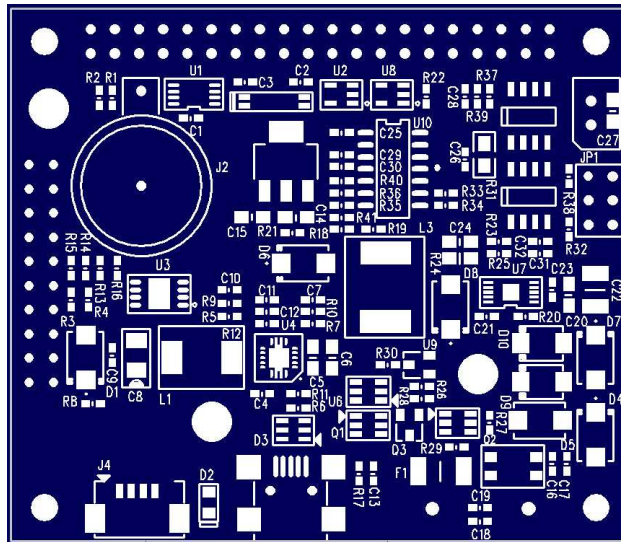


DINGO Raspberry PI3 EXPANSION Board

Item specifications

Go-IoT Item Id:	OPTION	DINGO-CB-PI3-EXPANSION-01
Raspberry PI		Raspberry PI 3+ , 3 . 2+ , 2
DINgo Plug In		1
USB		1 x USB 2.0 Type A Connectors
Serial Interface		1 x TTL Serial Debug Connector
Real Time Clock		DS1339 with Battery Backup
EEPROM		24LC32 – 4K x 8
I2C Ports		1
SPI Ports		1
Expansion Connectors		1 x 40way header to PI3 21 x GPIO
OS		Linux Raspian – DINgo Stack
Battery Backup	E	1 x Intelligent UPS and DC Supply Monitoring
DC Input	F	+12V @ 0.6A
DC Input	G	+15V DC - +42V DC
Size (L x W x H)		101 x 60 x 19 mm
Temperature		-20degree C to +85degree C
Country of Manufacture:		EU



J12 – 40WAY GPIO TO RASPBERRY PI

Pin	Port	Dir	Function	Description
1	+3.3V	IN	POWER	Main Power IN +3.3VDC
2	+5.0V	IN	POWER	Main Power IN +5.0VDC
3	GPIO02 – SDA1	BI	I2C	Connected to I2C Devices
4	+5.0V	IN	OPTO	Main Power IN +5.0VDC
5	GPIO02 – SCL1	OUT	I2C	Connected to I2C Devices
6	GND	IN	POWER	GROUND
7	GPIO4	OUT		CONNECTED TO DINGO MODULE
8	GPIO14 – UART0_TX	IN	OPTO	Serial Debug
9	GND	OUT	POWER	GROUND
10	GPIO15 – UART0_RX	OUT	OPTO	Serial Debug
11				
12				
13				
14	GND	IN	POWER	GROUND
15				
16				
17				
18				
19	GPIO10 – SPI0_MOSI	IN	SPI	CONNECTED TO DINGO MODULE
20	GND	IN	POWER	GROUND
21	GPIO9 – SPI0_MISO	IN	SPI	CONNECTED TO DINGO MODULE
22				GROUND
23	GPIO11 – SPI0_CLK	OUT	SPI	CONNECTED TO DINGO MODULE
24	GPIO8 – SPI0_CE0	OUT	SPI	CONNECTED TO DINGO MODULE
25	GND	OUT	POWER	GROUND
26	GPIO7 – SPI0_CE1	OUT	SPI	CONNECTED TO DINGO MODULE
27				
28				
29				
30	GND	IN	POWER	GROUND
31				
32				
33				
34	GND	IN	POWER	GROUND
35				
36				
37				
38	GPIO20			CONNECTED TO DINGO MODULE
39	GND	IN	POWER	GROUND
40	GND	IN	POWER	GROUND