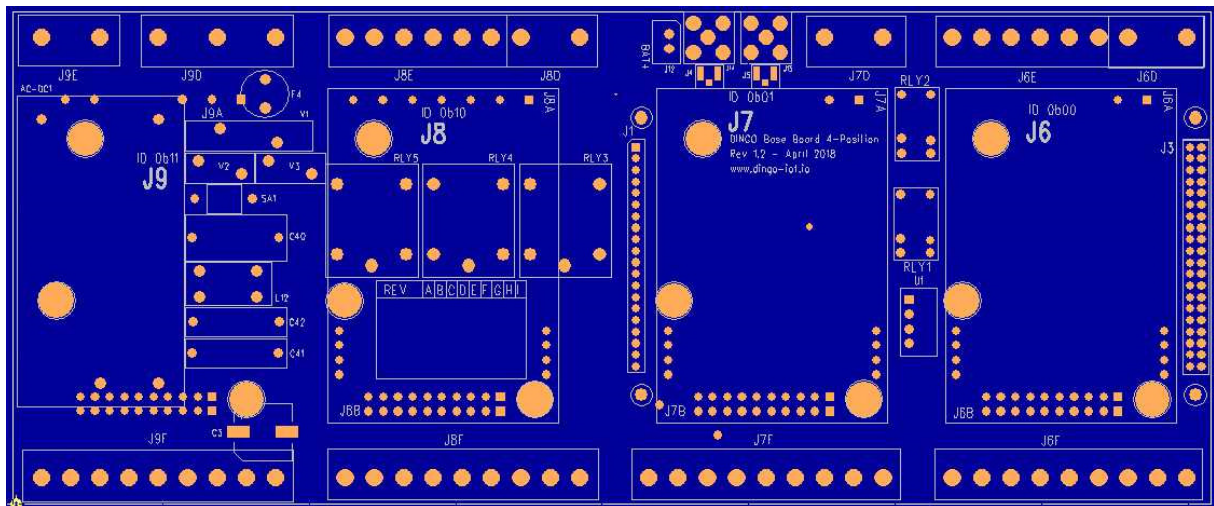


DINGO Four Station Base Board

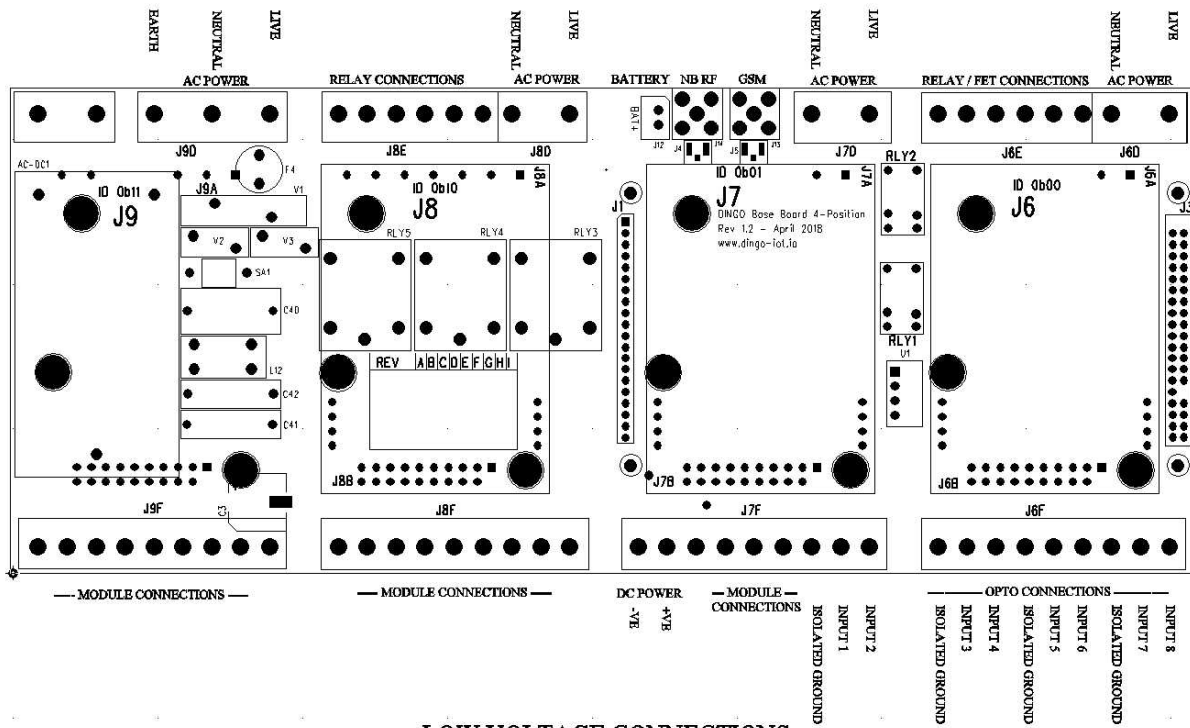
Item specifications

Go-IoT Item Id:	Option	DINGO-BB-4ST-01
Plug-in Positions		4
USB 2.0 Ports		4
Serial TTL Interfaces		2
I2C Ports		1
SPI Ports		1
Opto Isolated Inputs	A	4 Dry Inputs – 4 Wet Inputs
Relays	B	2 – 240VAC 1A
Opto Isolated FET Outputs	C	4 – N Channel 42V DC 14A
Relays	D	3 – 240VAC 10A – (Populated on Station 3)
Battery Backup	E	1 – Intelligent UPS and DC Supply Monitoring
Expansion Connectors		1 x 40way header from Computer Board 1 x 20way header from Computer Board 21 x GPIO
DC Input	F	+12V DC
DC Input	G	+15V DC - +42V DC
AC Input	H	110V AC – 240V AC – (Populated on Station 4)
Screw Terminals	J	
Push On Terminals	K	
Temperature		-20degree C to +85degree C
Size (L x W x H)		207 x 85 x 40 mm
Country/Region of Manufacture:		EU



3

HIGH VOLTAGE CONNECTIONS



LOW VOLTAGE CONNECTIONS